

## AJM Automation Ltd.

Tel: +44 (0) 1283 734388

Fax: +44 (0) 1283 734788

Email: sales@ajmautomation.com

URL: <http://www.ajmautomation.com>



---

### AJM-SSB

### Stainless Steel Biometric 21CFR-11 HMI

---



- Stainless steel bezel
- Fully 21CFR-11 compliant, with Datatrak software
- Built-in 'Trueprint' biometric fingerprint sensor
- InteractX HMI software
- CTC HMI PowerStation

**One box. One unit. One solution.**

---

Based on the HPX PowerStation from CTC Parker, the SSB unit is the world's first 'out-of-the-box' solution for regulated industry. With CTC's InteractX HMI software as standard, the SSB unit utilises Ultima Control System's Datatrak software to achieve complete 21CFR-11 compliance and biometric fingerprint authentication.

Available in 10", 15" and 17" to suit any application and fully customisable, the SSB unit is the most advanced HMI on the market.

---

## HMI Specifications

Based on the CTC Parker HPX or HPC powerstations

(Download the full HPX/C data sheet from <http://www.ajmautomation.com/downloads.php>)

- 10", 15" and 17" screen sizes
- 2.0GHZ Celeron or 2.8GHz Pentium 4 CPU
- 256 – 2GB shared DDR memory
- Intel extreme graphics
- Windows 2000 or Windows XP
- Hard Disk, compact flash, floppy and CDROM options
- Analogue resistive touch screen
- PS/2 ports for keyboard and mouse
- 4x USB, 1x serial, 1x parallel, 1x ethernet, 1x external video and audio connectors
- 2x optional PCI slots – 2 ¾ length or 2 full length
  
- Temperature range: 0-50°C
- Relative humidity: 5-95% non condensing
- Vibration: 5-500Hz .5grms (Random-operational-HD)  
5-500Hz 1grms (Random-operational-CompactFlash)
- Shock: 10G, 11msec (operating)  
30G, 11msec (non-operating)
- Approvals: UL/CUL, CE, Optional Class 1 Division 2 (pending)

## AJM Automation Ltd.

Tel: +44 (0) 1283 734388

Fax: +44 (0) 1283 734788

Email: sales@ajmautomation.com

URL: <http://www.ajmautomation.com>



### AJM-SSB

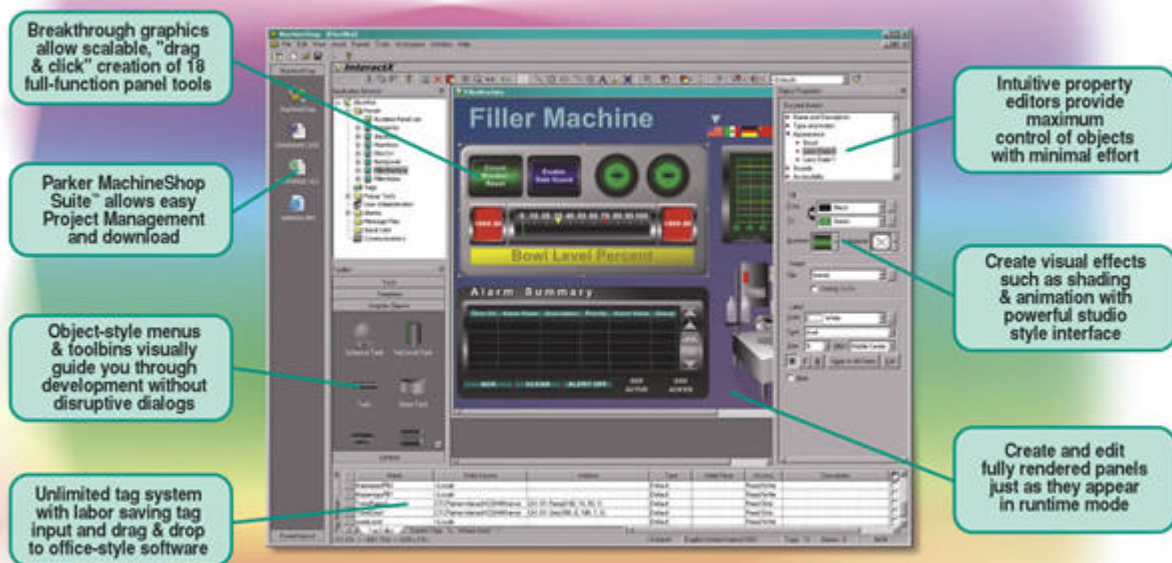
### Stainless Steel Biometric 21CFR-11 HMI

## Stainless Steel Bezel Specifications

- Available in 304, 316 and 316L grade stainless steel.
- 240 grit finish.
- Available as bezel only, without biometric sensor.

## InteractX HMI Software

(Download the full InteractX data sheets from <http://www.ajmautomation.com/downloads.php>)



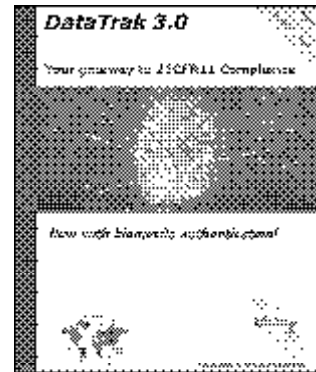
- Unlimited tags
- OPC tag server
- OPC client interface
- 40+ communication drivers
- ActiveX plug-in support
- Full VBA integration
- Free-form animation
- Unlimited colours
- Transparency & gradients
- Photographic support
- Complete multi-lingual support
- Real time alarming
- Historical alarming
- Panel tools library
- Windows NT/2000/XP

**DataTrak 3.0 specifications**

(Download the full DataTrak data sheets from <http://www.ultimacontrolsystems.co.uk/datatrak.htm>)

**User authentication and data tracking**

- Fully 21CFR-11 compliant system
- Fully integrated with InteractX
- Suitable for new and existing projects
- Unlimited end user languages
- Configurable screen colour and resolution
- Automatic audit trail generation
- 17 embedded screens provide compliant interface
- Support for SQL server or oracle database



**Biometric authentication**



- Utilises Authentecs patented Trueprint® technology
- Operates in one of three unique identification modes
- Quick, easy and efficient enrolment procedure
- 1:10,000 false reject rate (assuming 100 users)
- 1:500,000 false accept rate (assuming 100 users)
- Works with dirty or scratched fingers
- Cannot be fooled by fingerprint copies or images
- Built for harsh production environments

**Part numbers**

SSB part number follow the following format, where the HP number is the full HPC\X HMI part number.

HPC\X part numbers can be found on <http://www.ajmautomation.com/downloads/ctchardware/hpcxtech.pdf>

